

Moxie Beast

Calendered Rubber Strength & Conditioning Flooring

BUILT ON
itsTRU[™]
TECHNOLOGY

PRODUCT ATTRIBUTES

- **2.5mm Calendered Rubber Surface Layer**

A non-porous and durable surface that features an on-trend visual with organic color variation and a wood grain emboss that increases the durability and slip resistance of the surface

- **8mm VCR Factory Fusion-Bonded Beast Base Layer**

The ultra-dense base layer provides excellent shock absorption, substrate protection, and the unmatched durability of vulcanized composition rubber

*Transition-free to Moxie Motivate Plus and Performance Beast, allowing you to tailor the performance characteristics throughout your facility.

Just like the name suggests, Moxie Beast provides ultimate durability and shock absorption because of its extremely dense, fusion-bonded base layer and calendered rubber surface layer. Ideal for selectorized strength and heavy free-weight areas, Moxie Beast provides a non-porous surfacing solution that can handle weight drop and heavy fitness equipment.



APPLICATIONS

- Free Weights
- Selectorized Strength
- Cardio
- Spin
- Olympic Style Lifting
- Common Areas
- Therapy / Rehab

BENEFITS

- Durable
- Non-porous surface is easy to clean and sanitize
- Provides excellent shock absorption and substrate protection
- Withstands static loads
- Resists scuffing and marking

NOMINAL DIMENSIONS

Available as a standard in rolls. Talk to your local sales rep to determine availability, pricing, minimums, and lead times.



10.5mm (2.5mm + 8mm) x 48" (1.22m)

NRG =



Force Reduction: 17.8%

Absorption of impact energy



Energy Restitution: 59.0%

Useful return of impact energy

Typical Deltec Field Tester Results

*For additional force reduction and substrate protection, Moxie Beast can be field united to one of Ecore's ShockPads.



Moxie Beast

COLOR SWATCHES

Each color option includes organic and unique marbling of two colors throughout each roll. The final product will vary from samples and the below swatches.



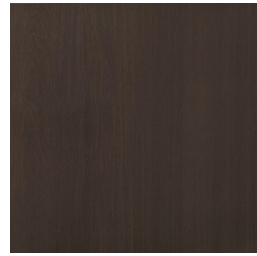
Blu 1501



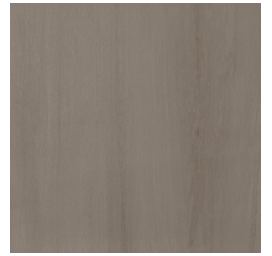
Carbone 1503



Grigio 1502



Marrone 1504



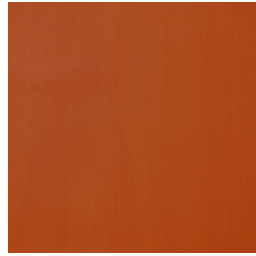
Crema 1500



Cremissi 1506



Diablo 1505



Arancia 1509



Viola 1508



Verde 1507

TECHNICAL DETAILS

Performance Criteria	Test Standard	Typical Results
Coefficient of Friction	ASTM D2047	>0.8
Chemical Resistance	ASTM F925	Good, no change
Abrasion Resistance	ASTM D3389	Pass
Flammability - Pill Test	ASTM D2859	Pass
Static Load Limit @250 PSI	ASTM F970	0.007"
Vertical Deformation	ASTM F2772	0.6 mm
Vertical Ball Rebound	ASTM F2772	Pass
Surface Effect Slip Resistance	ASTM F2772	Pass
VOC	CA 01350	Pass
Impact Insulation Class (IIC)*	ASTM E492	55
Delta IIC*	ASTM E2179	23

*Tested on a 6" concrete slab with no ceiling.