

2.0 SERIES. NEXT GENERATION. NEXT LEVEL.

---



Uti-MATE Garage 2.0 Series incorporates world-class design, industrial strength, contemporary style and value like no other line in marketplace. Consumers Digest back-to-back awarded "Best Buy" cabinet line takes the popular features from 1.0 Series to the next level.





## Top-Of-Class Features

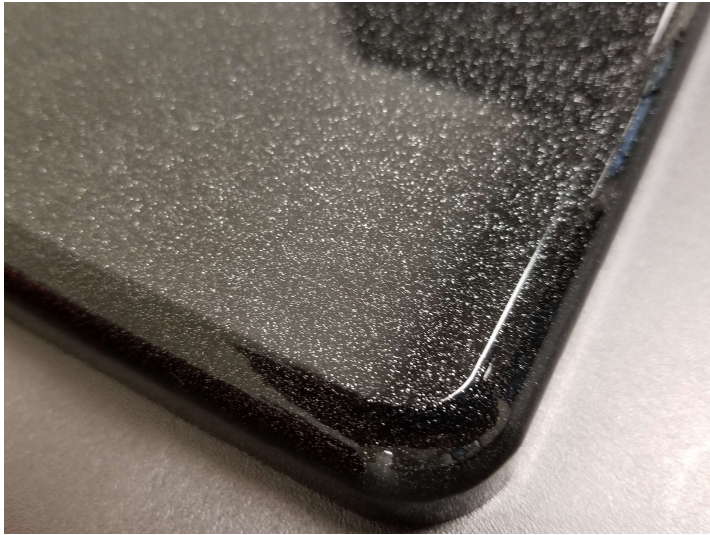
- Choice of Five (5) High-end Car-like Metallic Color Facings
- Strong  $\frac{3}{4}$ " MDF and PB Cabinet Construction in Grey
- Industrial Strength 1-inch Thick Shelves
- Full Extension Ball Bearing Drawer Glides
- Custom Shop-style Radius Profile
- Soft Close Fully Adjustable European Hinges
- Jumbo  $\frac{3}{4}$ " Thick Brushed Chrome Pulls
- Designer Style 6-inch Adjustable Feet
- Lower Base Cabinets Include Wall Hanging Cleat
- Lock Keeps Items Secure
- Wire Management System



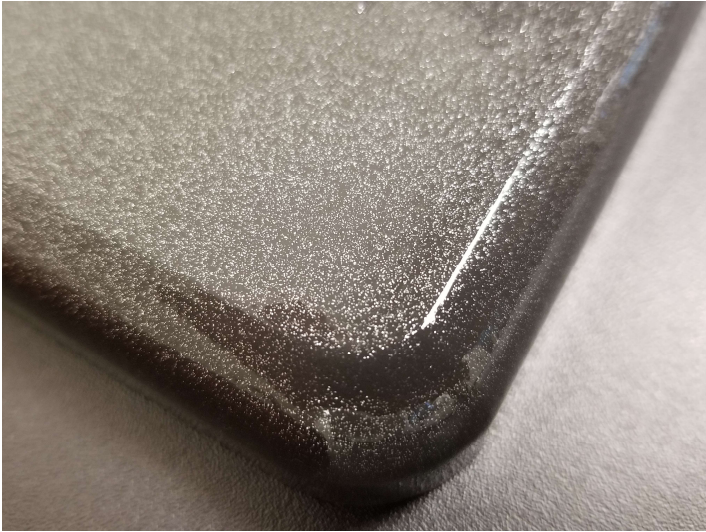
*Choice of Color*

## 5-METALLIC COLORS





*MIDNIGHT BLACK METALLIC*  
*PEPPERCORN GREY CABINET BOX COLOR*



*GRAPHITE GREY METALLIC*  
*PEPPERCORN GREY CABINET BOX COLOR*



*RUBY RED METALLIC*  
*PEPPERCORN GREY CABINET BOX COLOR*



*STARDUST SILVER METALLIC*  
*PEPPERCORN GREY CABINET BOX COLOR*





*STARFIRE WHITE METALLIC*  
*PEPPERCORN GREY CABINET BOX COLOR*

*Core of Designs*

2-DOOR BASE

## 2-Door Base Cabinet UG21002B

### FEATURES:

- Strong 3/4" MDF Facing in Midnight Black Metallic
  - Strong 3/4" MDF & PB Cabinet w/Peppercorn Grey Textured PVC Laminate
  - Custom Shop Full Radius Profile
  - Industrial Strength 1" Thick Wrapped Adjustable Shelf (1) with 200lb Load Rating
  - Industry Unique Integrated 1" Thick MDF Recessed Worktop
  - Jumbo 3/4" Thick Brushed Chrome Pulls
  - Designer 6" Adjustable Feet Keep Cabinets From Ground Moisture and Level
  - Wall Mounting Cleat Included\*
  - Lock Keeps Items Secure
  - Soft Close Hinges for Quiet and Smooth Operation
  - Wire Management System for Easy Cord Access to Outlets
  - Infinite Design and Expandable Options through Modular Design
  - CARB (California Air Resources Board) Approved to Help Environment
  - Color: Midnight Black Metallic and Peppercorn Grey
  - 10-Year Limited Manufacturer Parts Warranty
  - Maximum Dimensions: 23.6" W x 21" D x 37" H
  - Minimum Dimensions: 23.6" W x 21" D x 35" H
- \* Consult local cabinet professional on wall mounting & reduce weight for added safety.

Modular 2-Door Base Cabinet incorporates custom shop style and contemporary features to meet the most discerning project demands.



Midnight Black Metallic and Peppercorn Grey

## 2-Door Base Cabinet

### UG21002G

#### FEATURES:

- Strong 3/4" MDF Facing in Graphite Grey Metallic
  - Strong 3/4" MDF & PB Cabinet w/Peppercorn Grey Textured PVC Laminate
  - Custom Shop Full Radius Profile
  - Industrial Strength 1" Thick Wrapped Adjustable Shelf (1) with 200lb Load Rating
  - Industry Unique Integrated 1" Thick MDF Recessed Worktop
  - Jumbo 3/4" Thick Brushed Chrome Pulls
  - Designer 6" Adjustable Feet Keep Cabinets From Ground Moisture and Level
  - Wall Mounting Cleat Included\*
  - Lock Keeps Items Secure
  - Soft Close Hinges for Quiet and Smooth Operation
  - Wire Management System for Easy Cord Access to Outlets
  - Infinite Design and Expandable Options through Modular Design
  - CARB (California Air Resources Board) Approved to Help Environment
  - Color: Graphite Grey Metallic and Peppercorn Grey
  - 10-Year Limited Manufacturer Parts Warranty
  - Maximum Dimensions: 23.6" W x 21" D x 37" H
  - Minimum Dimensions: 23.6" W x 21" D x 35" H
- \* Consult local cabinet professional on wall mounting & reduce weight for added safety.

Modular 2-Door Base Cabinet incorporates custom shop style and contemporary features to meet the most discerning project demands.



Graphite Grey Metallic and Peppercorn Grey

## 2-Door Base Cabinet UG21002R

### FEATURES:

- Strong 3/4" MDF Facing in Ruby Red Metallic
  - Strong 3/4" MDF & PB Cabinet w/Peppercorn Grey Textured PVC Laminate
  - Custom Shop Full Radius Profile
  - Industrial Strength 1" Thick Wrapped Adjustable Shelf (1) with 200lb Load Rating
  - Industry Unique Integrated 1" Thick MDF Recessed Worktop
  - Jumbo 3/4" Thick Brushed Chrome Pulls
  - Designer 6" Adjustable Feet Keep Cabinets From Ground Moisture and Level
  - Wall Mounting Cleat Included\*
  - Lock Keeps Items Secure
  - Soft Close Hinges for Quiet and Smooth Operation
  - Wire Management System for Easy Cord Access to Outlets
  - Infinite Design and Expandable Options through Modular Design
  - CARB (California Air Resources Board) Approved to Help Environment
  - Color: Ruby Red Metallic and Peppercorn Grey
  - 10-Year Limited Manufacturer Parts Warranty
  - Maximum Dimensions: 23.6" W x 21" D x 37" H
  - Minimum Dimensions: 23.6" W x 21" D x 35" H
- \* Consult local cabinet professional on wall mounting & reduce weight for added safety.

Modular 2-Door Base Cabinet incorporates custom shop style and contemporary features to meet the most discerning project demands.



Ruby Red Metallic and Peppercorn Grey

## 2-Door Base Cabinet UG21002S

### FEATURES:

- Strong 3/4" MDF Facing in Stardust Silver Metallic
  - Strong 3/4" MDF & PB Cabinet w/Peppercorn Grey Textured PVC Laminate
  - Custom Shop Full Radius Profile
  - Industrial Strength 1" Thick Wrapped Adjustable Shelf (1) with 200lb Load Rating
  - Industry Unique Integrated 1" Thick MDF Recessed Worktop
  - Jumbo 3/4" Thick Brushed Chrome Pulls
  - Designer 6" Adjustable Feet Keep Cabinets From Ground Moisture and Level
  - Wall Mounting Cleat Included\*
  - Lock Keeps Items Secure
  - Soft Close Hinges for Quiet and Smooth Operation
  - Wire Management System for Easy Cord Access to Outlets
  - Infinite Design and Expandable Options through Modular Design
  - CARB (California Air Resources Board) Approved to Help Environment
  - Color: Stardust Silver Metallic and Peppercorn Grey
  - 10-Year Limited Manufacturer Parts Warranty
  - Maximum Dimensions: 23.6" W x 21" D x 37" H
  - Minimum Dimensions: 23.6" W x 21" D x 35" H
- \* Consult local cabinet professional on wall mounting & reduce weight for added safety.

Modular 2-Door Base Cabinet incorporates custom shop style and contemporary features to meet the most discerning project demands.



Stardust Silver Metallic and Peppercorn Grey

## 2-Door Base Cabinet UG21002W

### FEATURES:

- Strong 3/4" MDF Facing in Starfire White Metallic
  - Strong 3/4" MDF & PB Cabinet w/Peppercorn Grey Textured PVC Laminate
  - Custom Shop Full Radius Profile
  - Industrial Strength 1" Thick Wrapped Adjustable Shelf (1) with 200lb Load Rating
  - Industry Unique Integrated 1" Thick MDF Recessed Worktop
  - Jumbo 3/4" Thick Brushed Chrome Pulls
  - Designer 6" Adjustable Feet Keep Cabinets From Ground Moisture and Level
  - Wall Mounting Cleat Included\*
  - Lock Keeps Items Secure
  - Soft Close Hinges for Quiet and Smooth Operation
  - Wire Management System for Easy Cord Access to Outlets
  - Infinite Design and Expandable Options through Modular Design
  - CARB (California Air Resources Board) Approved to Help Environment
  - Color: Starfire White Metallic and Peppercorn Grey
  - 10-Year Limited Manufacturer Parts Warranty
  - Maximum Dimensions: 23.6" W x 21" D x 37" H
  - Minimum Dimensions: 23.6" W x 21" D x 35" H
- \* Consult local cabinet professional on wall mounting & reduce weight for added safety.

Modular 2-Door Base Cabinet incorporates custom shop style and contemporary features to meet the most discerning project demands.



Starfire White Metallic and Peppercorn Grey

*Core of Designs*

4-DRAWER BASE



## 4-Drawer Base Cabinet

### UG21004B

#### FEATURES:

- Strong 3/4" MDF Facing in Midnight Black Metallic
  - Strong 3/4" MDF & PB Cabinet w/Peppercorn Grey Textured PVC Laminate
  - Custom Shop Full Radius Profile
  - Industry Unique Integrated 1" Thick MDF Recessed Worktop
  - Jumbo 3/4" Thick Brushed Chrome Pulls
  - Designer 6" Adjustable Feet Keep Cabinets From Ground Moisture and Level
  - Wall Mounting Cleat Included\*
  - Lock Keeps Items Secure
  - Smooth Operating Full Extension Ball Bearing Drawer Glides
  - Infinite Design and Expandable Options through Modular Design
  - CARB (California Air Resources Board) Approved to Help Environment
  - Color: Midnight Black Metallic and Peppercorn Grey
  - 10-Year Limited Manufacturer Parts Warranty
  - Maximum Dimensions: 23.6" W x 21" D x 37" H
  - Minimum Dimensions: 23.6" W x 21" D x 35" H
- \* Consult local cabinet professional on wall mounting & reduce weight for added safety.

Modular 4-Drawer Base Cabinet incorporates custom shop style and contemporary features to meet the most discerning project demands.



Midnight Black Metallic and Peppercorn Grey

## 4-Drawer Base Cabinet UG21004G

### FEATURES:

- Strong 3/4" MDF Facing in Graphite Grey Metallic
  - Strong 3/4" MDF & PB Cabinet w/Peppercorn Grey Textured PVC Laminate
  - Custom Shop Full Radius Profile
  - Industry Unique Integrated 1" Thick MDF Recessed Worktop
  - Jumbo 3/4" Thick Brushed Chrome Pulls
  - Designer 6" Adjustable Feet Keep Cabinets From Ground Moisture and Level
  - Wall Mounting Cleat Included\*
  - Lock Keeps Items Secure
  - Smooth Operating Full Extension Ball Bearing Drawer Glides
  - Infinite Design and Expandable Options through Modular Design
  - CARB (California Air Resources Board) Approved to Help Environment
  - Color: Graphite Grey Metallic and Peppercorn Grey
  - 10-Year Limited Manufacturer Parts Warranty
  - Maximum Dimensions: 23.6" W x 21" D x 37" H
  - Minimum Dimensions: 23.6" W x 21" D x 35" H
- \* Consult local cabinet professional on wall mounting & reduce weight for added safety.

Modular 4-Drawer Base Cabinet incorporates custom shop style and contemporary features to meet the most discerning project demands.



Graphite Grey Metallic and Peppercorn Grey

## 4-Drawer Base Cabinet UG21004R

### FEATURES:

- Strong 3/4" MDF Facing in Ruby Red Metallic
  - Strong 3/4" MDF & PB Cabinet w/Peppercorn Grey Textured PVC Laminate
  - Custom Shop Full Radius Profile
  - Industry Unique Integrated 1" Thick MDF Recessed Worktop
  - Jumbo 3/4" Thick Brushed Chrome Pulls
  - Designer 6" Adjustable Feet Keep Cabinets From Ground Moisture and Level
  - Wall Mounting Cleat Included\*
  - Lock Keeps Items Secure
  - Smooth Operating Full Extension Ball Bearing Drawer Glides
  - Infinite Design and Expandable Options through Modular Design
  - CARB (California Air Resources Board) Approved to Help Environment
  - Color: Ruby Red Metallic and Peppercorn Grey
  - 10-Year Limited Manufacturer Parts Warranty
  - Maximum Dimensions: 23.6" W x 21" D x 37" H
  - Minimum Dimensions: 23.6" W x 21" D x 35" H
- \* Consult local cabinet professional on wall mounting & reduce weight for added safety.

Modular 4-Drawer Base Cabinet incorporates custom shop style and contemporary features to meet the most discerning project demands.



Ruby Red Metallic and Peppercorn Grey

## 4-Drawer Base Cabinet

### UG21004S

#### FEATURES:

- Strong 3/4" MDF Facing in Stardust Silver Metallic
  - Strong 3/4" MDF & PB Cabinet w/Peppercorn Grey Textured PVC Laminate
  - Custom Shop Full Radius Profile
  - Industry Unique Integrated 1" Thick MDF Recessed Worktop
  - Jumbo 3/4" Thick Brushed Chrome Pulls
  - Designer 6" Adjustable Feet Keep Cabinets From Ground Moisture and Level
  - Wall Mounting Cleat Included\*
  - Lock Keeps Items Secure
  - Smooth Operating Full Extension Ball Bearing Drawer Glides
  - Infinite Design and Expandable Options through Modular Design
  - CARB (California Air Resources Board) Approved to Help Environment
  - Color: Stardust Silver Metallic and Peppercorn Grey
  - 10-Year Limited Manufacturer Parts Warranty
  - Maximum Dimensions: 23.6" W x 21" D x 37" H
  - Minimum Dimensions: 23.6" W x 21" D x 35" H
- \* Consult local cabinet professional on wall mounting & reduce weight for added safety.

Modular 4-Drawer Base Cabinet incorporates custom shop style and contemporary features to meet the most discerning project demands.



Stardust Silver Metallic and Peppercorn Grey

## 4-Drawer Base Cabinet UG21004W

### FEATURES:

- Strong 3/4" MDF Facing in Starfire White Metallic
  - Strong 3/4" MDF & PB Cabinet w/Peppercorn Grey Textured PVC Laminate
  - Custom Shop Full Radius Profile
  - Industry Unique Integrated 1" Thick MDF Recessed Worktop
  - Jumbo 3/4" Thick Brushed Chrome Pulls
  - Designer 6" Adjustable Feet Keep Cabinets From Ground Moisture and Level
  - Wall Mounting Cleat Included\*
  - Lock Keeps Items Secure
  - Smooth Operating Full Extension Ball Bearing Drawer Glides
  - Infinite Design and Expandable Options through Modular Design
  - CARB (California Air Resources Board) Approved to Help Environment
  - Color: Starfire White Metallic and Peppercorn Grey
  - 10-Year Limited Manufacturer Parts Warranty
  - Maximum Dimensions: 23.6" W x 21" D x 37" H
  - Minimum Dimensions: 23.6" W x 21" D x 35" H
- \* Consult local cabinet professional on wall mounting & reduce weight for added safety.

Modular 4-Drawer Base Cabinet incorporates custom shop style and contemporary features to meet the most discerning project demands.



Starfire White Metallic and Peppercorn Grey

*Core of Designs*

2-DOOR TALL



## 2-Door Tall Cabinet

### UG21006B

#### FEATURES:

- Strong 3/4" MDF Facing in Midnight Black Metallic
  - Strong 3/4" MDF & PB Cabinet w/Peppercorn Grey Textured PVC Laminate
  - Custom Shop Full Radius Profile
  - Three (3) 1" Thick Shelves (1-Fixed & 2-Adjustable) w/200lb Load Rating
  - Jumbo 3/4" Thick Brushed Chrome Pulls
  - Designer 6" Adjustable Feet Keep Cabinets From Ground Moisture and Level
  - Lock Keeps Items Secure
  - Soft Close Hinges for Quiet and Smooth Operation
  - Wire Management System for Easy Cord Access to Outlets
  - Infinite Design Options through Modular Design
  - CARB (California Air Resources Board) Approved to Help Environment
  - Color: Midnight Black Metallic and Peppercorn Grey
  - 10-Year Limited Manufacturer Parts Warranty
  - Maximum Dimensions: 35.5" W x 21" D x 82" H
  - Minimum Dimensions: 35.5" W x 21" D x 80" H
- \* Consult local cabinet professional on wall mounting & reduce weight for added safety.

Modular 2-Door Tall Cabinet incorporates custom shop style and contemporary features to meet the most discerning project demands.



Midnight Black Metallic and Peppercorn Grey

## 2-Door Tall Cabinet

### UG21006G

#### FEATURES:

- Strong 3/4" MDF Facing in Graphite Grey Metallic
  - Strong 3/4" MDF & PB Cabinet w/Peppercorn Grey Textured PVC Laminate
  - Custom Shop Full Radius Profile
  - Three (3) 1" Thick Shelves (1-Fixed & 2-Adjustable) w/200lb Load Rating
  - Jumbo 3/4" Thick Brushed Chrome Pulls
  - Designer 6" Adjustable Feet Keep Cabinets From Ground Moisture and Level
  - Lock Keeps Items Secure
  - Soft Close Hinges for Quiet and Smooth Operation
  - Wire Management System for Easy Cord Access to Outlets
  - Infinite Design Options through Modular Design
  - CARB (California Air Resources Board) Approved to Help Environment
  - Color: Graphite Grey Metallic and Peppercorn Grey
  - 10-Year Limited Manufacturer Parts Warranty
  - Maximum Dimensions: 35.5" W x 21" D x 82" H
  - Minimum Dimensions: 35.5" W x 21" D x 80" H
- \* Consult local cabinet professional on wall mounting & reduce weight for added safety.

Modular 2-Door Tall Cabinet incorporates custom shop style and contemporary features to meet the most discerning project demands.



Graphite Grey Metallic and Peppercorn Grey



## 2-Door Tall Cabinet UG21006R

### FEATURES:

- Strong 3/4" MDF Facing in Ruby Red Metallic
  - Strong 3/4" MDF & PB Cabinet w/Peppercorn Grey Textured PVC Laminate
  - Custom Shop Full Radius Profile
  - Three (3) 1" Thick Shelves (1-Fixed & 2-Adjustable) w/200lb Load Rating
  - Jumbo 3/4" Thick Brushed Chrome Pulls
  - Designer 6" Adjustable Feet Keep Cabinets From Ground Moisture and Level
  - Lock Keeps Items Secure
  - Soft Close Hinges for Quiet and Smooth Operation
  - Wire Management System for Easy Cord Access to Outlets
  - Infinite Design Options through Modular Design
  - CARB (California Air Resources Board) Approved to Help Environment
  - Color: Ruby Red Metallic and Peppercorn Grey
  - 10-Year Limited Manufacturer Parts Warranty
  - Maximum Dimensions: 35.5" W x 21" D x 82" H
  - Minimum Dimensions: 35.5" W x 21" D x 80" H
- \* Consult local cabinet professional on wall mounting & reduce weight for added safety.

Modular 2-Door Tall Cabinet incorporates custom shop style and contemporary features to meet the most discerning project demands.



Ruby Red Metallic and Peppercorn Grey

## 2-Door Tall Cabinet UG21006S

### FEATURES:

- Strong 3/4" MDF Facing in Stardust Silver Metallic
  - Strong 3/4" MDF & PB Cabinet w/Peppercorn Grey Textured PVC Laminate
  - Custom Shop Full Radius Profile
  - Three (3) 1" Thick Shelves (1-Fixed & 2-Adjustable) w/200lb Load Rating
  - Jumbo 3/4" Thick Brushed Chrome Pulls
  - Designer 6" Adjustable Feet Keep Cabinets From Ground Moisture and Level
  - Lock Keeps Items Secure
  - Soft Close Hinges for Quiet and Smooth Operation
  - Wire Management System for Easy Cord Access to Outlets
  - Infinite Design Options through Modular Design
  - CARB (California Air Resources Board) Approved to Help Environment
  - Color: Stardust Silver Metallic and Peppercorn Grey
  - 10-Year Limited Manufacturer Parts Warranty
  - Maximum Dimensions: 35.5" W x 21" D x 82" H
  - Minimum Dimensions: 35.5" W x 21" D x 80" H
- \* Consult local cabinet professional on wall mounting & reduce weight for added safety.

Modular 2-Door Tall Cabinet incorporates custom shop style and contemporary features to meet the most discerning project demands.



Stardust Silver Metallic and Peppercorn Grey

## 2-Door Tall Cabinet UG21006W

### FEATURES:

- Strong 3/4" MDF Facing in Starfire White Metallic
  - Strong 3/4" MDF & PB Cabinet w/Peppercorn Grey Textured PVC Laminate
  - Custom Shop Full Radius Profile
  - Three (3) 1" Thick Shelves (1-Fixed & 2-Adjustable) w/200lb Load Rating
  - Jumbo 3/4" Thick Brushed Chrome Pulls
  - Designer 6" Adjustable Feet Keep Cabinets From Ground Moisture and Level
  - Lock Keeps Items Secure
  - Soft Close Hinges for Quiet and Smooth Operation
  - Wire Management System for Easy Cord Access to Outlets
  - Infinite Design Options through Modular Design
  - CARB (California Air Resources Board) Approved to Help Environment
  - Color: Starfire White Metallic and Peppercorn Grey
  - 10-Year Limited Manufacturer Parts Warranty
  - Maximum Dimensions: 35.5" W x 21" D x 82" H
  - Minimum Dimensions: 35.5" W x 21" D x 80" H
- \* Consult local cabinet professional on wall mounting & reduce weight for added safety.

Modular 2-Door Tall Cabinet incorporates custom shop style and contemporary features to meet the most discerning project demands.



Starfire White Metallic and Peppercorn Grey

*Core of Designs*

2-DOOR WALL

## 2-Door Wall Cabinet

### UG21009B

#### FEATURES:

- Strong 3/4" MDF Facing in Midnight Black Metallic
  - Strong 3/4" MDF & PB Cabinet w/Peppercorn Grey Textured PVC Laminate
  - Custom Shop Full Radius Profile
  - Industrial Strength 1" Thick Wrapped Adjustable Shelf (1) with 200lb Load Rating
  - Jumbo 3/4" Thick Brushed Chrome Pulls
  - Wall Mounting Cleat Included\*
  - Lock Keeps Items Secure
  - Soft Close Hinges for Quiet and Smooth Operation
  - Infinite Design Options through Modular Design
  - CARB (California Air Resources Board) Approved to Help Environment
  - Color: Midnight Black Metallic and Peppercorn Grey
  - 10-Year Limited Manufacturer Parts Warranty
  - Maximum Dimensions: 23.6" W x 14" D x 23.6" H
  - Minimum Dimensions: 23.6" W x 14" D x 23.6" H
- \* Consult local cabinet professional on wall mounting & reduce weight for added safety.

Modular 2-Door Wall Cabinet provides space saving organization, strength and custom shop style to meet the most discerning project demands.



Midnight Black Metallic and Peppercorn Grey

## 2-Door Wall Cabinet

### UG21009G

#### FEATURES:

- Strong 3/4" MDF Facing in Graphite Grey Metallic
  - Strong 3/4" MDF & PB Cabinet w/Peppercorn Grey Textured PVC Laminate
  - Custom Shop Full Radius Profile
  - Industrial Strength 1" Thick Wrapped Adjustable Shelf (1) with 200lb Load Rating
  - Jumbo 3/4" Thick Brushed Chrome Pulls
  - Wall Mounting Cleat Included\*
  - Lock Keeps Items Secure
  - Soft Close Hinges for Quiet and Smooth Operation
  - Infinite Design Options through Modular Design
  - CARB (California Air Resources Board) Approved to Help Environment
  - Color: Graphite Grey Metallic and Peppercorn Grey
  - 10-Year Limited Manufacturer Parts Warranty
  - Maximum Dimensions: 23.6" W x 14" D x 23.6" H
  - Minimum Dimensions: 23.6" W x 14" D x 23.6" H
- \* Consult local cabinet professional on wall mounting & reduce weight for added safety.

Modular 2-Door Wall Cabinet provides space saving organization, strength and custom shop style to meet the most discerning project demands.



Graphite Grey Metallic and Peppercorn Grey

## 2-Door Wall Cabinet

### UG21009R

#### FEATURES:

- Strong 3/4" MDF Facing in Ruby Red Metallic
  - Strong 3/4" MDF & PB Cabinet w/Peppercorn Grey Textured PVC Laminate
  - Custom Shop Full Radius Profile
  - Industrial Strength 1" Thick Wrapped Adjustable Shelf (1) with 200lb Load Rating
  - Jumbo 3/4" Thick Brushed Chrome Pulls
  - Wall Mounting Cleat Included\*
  - Lock Keeps Items Secure
  - Soft Close Hinges for Quiet and Smooth Operation
  - Infinite Design Options through Modular Design
  - CARB (California Air Resources Board) Approved to Help Environment
  - Color: Ruby Red Metallic and Peppercorn Grey
  - 10-Year Limited Manufacturer Parts Warranty
  - Maximum Dimensions: 23.6" W x 14" D x 23.6" H
  - Minimum Dimensions: 23.6" W x 14" D x 23.6" H
- \* Consult local cabinet professional on wall mounting & reduce weight for added safety.

Modular 2-Door Wall Cabinet provides space saving organization, strength and custom shop style to meet the most discerning project demands.



Ruby Red Metallic and Peppercorn Grey

## 2-Door Wall Cabinet

### UG21009S

#### FEATURES:

- Strong 3/4" MDF Facing in Stardust Silver Metallic
  - Strong 3/4" MDF & PB Cabinet w/Peppercorn Grey Textured PVC Laminate
  - Custom Shop Full Radius Profile
  - Industrial Strength 1" Thick Wrapped Adjustable Shelf (1) with 200lb Load Rating
  - Jumbo 3/4" Thick Brushed Chrome Pulls
  - Wall Mounting Cleat Included\*
  - Lock Keeps Items Secure
  - Soft Close Hinges for Quiet and Smooth Operation
  - Infinite Design Options through Modular Design
  - CARB (California Air Resources Board) Approved to Help Environment
  - Color: Stardust Silver Metallic and Peppercorn Grey
  - 10-Year Limited Manufacturer Parts Warranty
  - Maximum Dimensions: 23.6" W x 14" D x 23.6" H
  - Minimum Dimensions: 23.6" W x 14" D x 23.6" H
- \* Consult local cabinet professional on wall mounting & reduce weight for added safety.

Modular 2-Door Wall Cabinet provides space saving organization, strength and custom shop style to meet the most discerning project demands.



Stardust Silver Metallic and Peppercorn Grey



## 2-Door Wall Cabinet UG21009W

### FEATURES:

- Strong 3/4" MDF Facing in Starfire White Metallic
  - Strong 3/4" MDF & PB Cabinet w/Peppercorn Grey Textured PVC Laminate
  - Custom Shop Full Radius Profile
  - Industrial Strength 1" Thick Wrapped Adjustable Shelf (1) with 200lb Load Rating
  - Jumbo 3/4" Thick Brushed Chrome Pulls
  - Wall Mounting Cleat Included\*
  - Lock Keeps Items Secure
  - Soft Close Hinges for Quiet and Smooth Operation
  - Infinite Design Options through Modular Design
  - CARB (California Air Resources Board) Approved to Help Environment
  - Color: Starfire White Metallic and Peppercorn Grey
  - 10-Year Limited Manufacturer Parts Warranty
  - Maximum Dimensions: 23.6" W x 14" D x 23.6" H
  - Minimum Dimensions: 23.6" W x 14" D x 23.6" H
- \* Consult local cabinet professional on wall mounting & reduce weight for added safety.

Modular 2-Door Wall Cabinet provides space saving organization, strength and custom shop style to meet the most discerning project demands.



Midnight Black Metallic and Peppercorn Grey

*Dream Workstation*

WORKTOP SURFACES



## *Recessed 6-Ft Worktop Surface* *UG21010*

### FEATURES:

- Strong 1.5" Thick MDF
- Unique Recessed and Channeled Surface
- Dual Position Options of Channeled Area (near or away)
- Textured PVC Laminate
- 1.5" Thick Solid Bamboo Worktop
- Custom Shop Full Radius Profile
- Industrial Strength 300 lb Weight Load
- CARB Approved Eco-Friendly Product to Help Improve Environment
- Color: Peppercorn Grey
- 10-Year Limited Manufacturer Parts Warranty
- Maximum Dimensions: 70.90" W x 21" D x 1.5" H
- Minimum Dimensions: 70.90" W x 21" D x 1.5" H.

Unique Recessed & Channeled Worktop Surface Keeps Items from Rolling Off



Actual Color: Peppercorn Grey not Pictured

## *Solid Bamboo 6-Ft Worktop Surface*

*GA-10BB*

*Professionally Installed: \$395.00*

### FEATURES:

- Strong 1.5" Thick Solid Bamboo Worktop
- Custom Shop Full Radius Profile
- Industrial Strength 300 lb Weight Load
- Eco-Friendly Product to Help Improve Environment
- Color: Bamboo | Tan
- 10-Year Limited Manufacturer Parts Warranty
- Maximum Dimensions: 70.9" W x 21" D x 1.5" H
- Minimum Dimensions: 70.9" W x 21" D x 1.5" H.

Solid Bamboo Worktop Surface creates that dream workstation in conjunction with two (2) Ulti-MATE base cabinets... just add a comfy stool



*Value Added Cabinet Kits*

CABINET KITS PROVIDE SAVINGS & INFINITE DESIGN OPTIONS

IF NO KIT MEETS YOUR PROJECT NEEDS, CONTACT YOUR DEALER  
FOR CUSTOM KIT QUOTE... ENDLESS POSSIBILITIES

EACH KIT AVAILABLE IN 5-METALLIC COLOR OPTIONS

*Industrial Strength Storage*

TALL CABINET KITS

## 2-Piece Tall Cabinet Set

### UG22620G

Need oversized storage and short on space? This 2-piece tall cabinet set is great for any garage, workshop or business application that requires industrial strength and unique contemporary style. Offers nearly 6-ft of single or multi-wall designs and ability to expand as your organization needs change. Metallic gloss car-like color facing available in five (5) color options.

#### FEATURES:

- Strong ¾" MDF and PB Cabinet Construction w/Textured Grey PVC Laminate
- Strong ¾" MDF Facings with PVC Gloss Metallic Color
- Industrial Strength 1-inch Thick Shelves with 200 lb Load Rating
- Jumbo 0.75-inch Brushed Chrome Pulls
- Custom Shop Style Full Radius Profile
- Lock secures Items
- Designer Style 6-inch Feet Keep Cabinets Away from Moisture
- Color: Available in Five (5) Colors
- Maximum Dimensions: 71" W x 21" D x 82" H
- Minimum Dimensions: 71" W x 21" D x 80" H

Offers nearly 6-feet of Oversized Storage



Pictured in Graphite Grey Metallic and Peppercorn Grey

## 3-Piece Tall Cabinet Set

### UG22630R

Need oversized storage and to get clutter-free in less than 10-ft, this is the popular choice. This three (3) piece tall cabinet set offers nearly 9-ft of single or multi-wall designs (8.88-ft pictured). Metallic gloss car-like color facing available in five (5) color options, contemporary style and industrial strength will have you the envy of all.

#### FEATURES:

- Strong  $\frac{3}{4}$ " MDF and PB Cabinet Construction w/Textured Grey PVC Laminate
- Strong  $\frac{3}{4}$ " MDF Facings with PVC Gloss Metallic Color
- Industrial Strength 1-inch Thick Shelves with 200 lb Load Rating
- Jumbo 0.75-inch Brushed Chrome Pulls
- Custom Shop Style Full Radius Profile
- Lock secures Items
- Designer Style 6-inch Feet Keep Cabinets Away from Moisture
- Color: Available in Five (5) Colors
- Maximum Dimensions: 106.50" W x 21" D x 82" H
- Minimum Dimensions: 106.50" W x 21" D x 80" H

Offers nearly 15-ft of infinite design options.



Pictured in Ruby Red Metallic and Peppercorn Grey





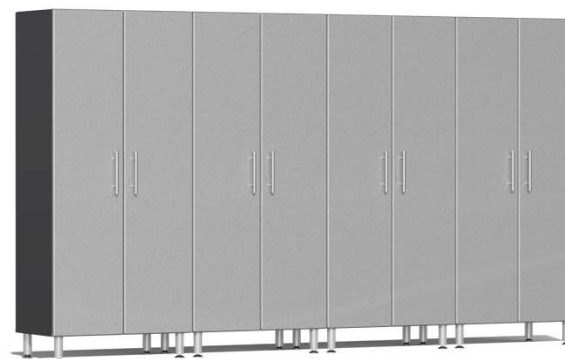
## 4-Piece Tall Cabinet Set UG22640S

This oversized tall cabinet set offers nearly 12-ft of storage power for single or multi-wall designs. Metallic gloss car-like color facing available in five (5) color options, 1-inch thick industrial strength shelves (3-per cabinet) will get you clutter-free in style and strength.

### FEATURES:

- Strong  $\frac{3}{4}$ " MDF and PB Cabinet Construction w/Textured Grey PVC Laminate
- Strong  $\frac{3}{4}$ " MDF Facings with PVC Gloss Metallic Color
- Industrial Strength 1-inch Thick Shelves with 200 lb Load Rating
- Jumbo 0.75-inch Brushed Chrome Pulls
- Custom Shop Style Full Radius Profile
- Lock secures Items
- Designer Style 6-inch Feet Keep Cabinets Away from Moisture
- Color: Available in Five (5) Colors
- Maximum Dimensions: 177.50" W x 21" D x 82" H
- Minimum Dimensions: 177.50" W x 21" D x 80" H

Offers nearly 12-ft of infinite design options.



Pictured in Stardust Silver Metallic and Peppercorn Grey



## 5-Piece Tall Cabinet Set UG22650W

This oversized tall cabinet set offers nearly 15-ft of storage power for single or multi-wall designs (14.79-ft pictured). Metallic gloss car-like color facing available in five (5) color options, 1-inch thick industrial strength shelves (3-per cabinet) will get you clutter-free in style and strength.

### FEATURES:

- Strong  $\frac{3}{4}$ " MDF and PB Cabinet Construction w/Textured Grey PVC Laminate
- Strong  $\frac{3}{4}$ " MDF Facings with PVC Gloss Metallic Color
- Industrial Strength 1-inch Thick Shelves with 200 lb Load Rating
- Jumbo 0.75-inch Brushed Chrome Pulls
- Custom Shop Style Full Radius Profile
- Lock secures Items
- Designer Style 6-inch Feet Keep Cabinets Away from Moisture
- Color: Available in Five (5) Colors
- Maximum Dimensions: 177.50" W x 21" D x 82" H
- Minimum Dimensions: 177.50" W x 21" D x 80" H

Offers nearly 15-ft of infinite design options.



Pictured in Starfire White Metallic and Peppercorn Grey

## 8-Piece Tall Cabinet Set UG22680B

This eight (8) piece set offers tower of storage power to tackle any garage or workshop demands in style and industrial strength like no other line. Each cabinet provides three (3) 1-inch thick shelves with 200 lb load rating. Single or multi-wall design options will meet the most diverse project needs. Metallic gloss car-like color facing available in five (5) color options.

### FEATURES:

- Strong ¾" MDF and PB Cabinet Construction w/Textured Grey PVC Laminate
- Strong ¾" MDF Facings with PVC Gloss Metallic Color
- Industrial Strength 1-inch Thick Shelves with 200 lb Load Rating
- Jumbo 0.75-inch Brushed Chrome Pulls
- Custom Shop Style Full Radius Profile
- Lock secures Items
- Designer Style 6-inch Feet Keep Cabinets Away from Moisture
- Color: Available in Five (5) Colors
- Maximum Dimensions: 284" W x 21" D x 82" H
- Minimum Dimensions: 284" W x 21" D x 80" H

Offers nearly 24-feet of oversized storage.



Pictured in Midnight Black Metallic and Peppercorn Grey

Infinite Design Options

VARIETY KITS



## 5-Piece with Workstation UG22051B

Five (5) piece kit with workstation is the perfect solution for spaces under 9-feet and require diversified storage options. Modular design provides infinite and expandable design options for single or multi-wall designs (8.87-ft pictured). Metallic gloss car-like color facing available in five (5) color options and industrial strength 1-inch thick shelves are just a few features that transform your project.

### FEATURES:

- Strong ¾" MDF and PB Cabinet Construction w/Textured Grey PVC Laminate
- Strong ¾" MDF Facings with PVC Gloss Metallic Color
- Industrial Strength 1-inch Thick Shelves with 200 lb Load Rating
- Full Extension Drawer Glides with 100 lb Load Rating
- Jumbo 0.75-inch Brushed Chrome Pulls
- Custom Shop Style Full Radius Profile
- Lock secures Items
- Designer Style 6-inch Feet Keep Cabinets Away from Moisture
- Color: Available in Five (5) Colors
- Maximum Dimensions: 130" W x 21" D x 82" H
- Minimum Dimensions: 106.50" W x 21" D x 80" H

Offers nearly 11-ft of infinite design options. Pictured; 8.88-ft.



Pictured in Midnight Black Metallic and Peppercorn Grey



## 5-Piece Starter Set UG22050W

This five(5) piece starter set is great for smaller spaces and provides ability to expand as your needs change. Infinite design options for single or multi-wall designs. Base cabinets provide integrated recessed worktop. Metallic gloss car-like color facing available in five (5) color options and ability to mix and match colors for unique designs will have you the envy of all.

### FEATURES:

- Strong ¾" MDF and PB Cabinet Construction w/Textured Grey PVC Laminate
- Strong ¾" MDF Facings with PVC Gloss Metallic Color
- Industrial Strength 1-inch Thick Shelves with 200 lb Load Rating
- Full Extension Drawer Glides with 100 lb Load Rating
- Jumbo 0.75-inch Brushed Chrome Pulls
- Custom Shop Style Full Radius Profile
- Lock secures Items
- Designer Style 6-inch Feet Keep Cabinets Away from Moisture
- Color: Available in Five (5) Colors
- Maximum Dimensions: 129.90" W x 21" D x 82" H
- Minimum Dimensions: 82.70" W x 21" D x 80" H

Offers nearly 11-ft of infinite design options. Pictured; 6.89-ft.



Pictured in Starfire White Metallic and Peppercorn Grey



## 7-Piece w/Bamboo Worktop UG22072G

This seven (7) piece kit with upgraded solid Bamboo worktop is great for smaller spaces not exceeding 6-ft. Provides ability to expand as your needs change. Metallic gloss car-like color facing available in five (5) color options and ability to mix and match colors for unique designs make this the perfect solution.

### FEATURES:

- Strong  $\frac{3}{4}$ " MDF and PB Cabinet Construction w/Textured Grey PVC Laminate
- Strong  $\frac{3}{4}$ " MDF Facings with PVC Gloss Metallic Color
- Industrial Strength 1-inch Thick Shelves with 200 lb Load Rating
- Full Extension Drawer Glides with 100 lb Load Rating
- Jumbo 0.75-inch Brushed Chrome Pulls
- Custom Shop Style Full Radius Profile
- Lock secures Items
- Designer Style 6-inch Feet Keep Cabinets Away from Moisture
- Color: Available in Five (5) Colors
- Maximum Dimensions: 213" W x 21" D x 82" H
- Minimum Dimensions: 142" W x 21" D x 80" H

Nearly 12-ft of storage options. Pictured; 71-inches.



Pictured in Graphite Grey Metallic and Peppercorn Grey



## 7-Piece w/Bamboo Worktop UG24072S

This seven (7) piece kit creates that perfect workstation, just add a comfy stool and perhaps a clock or picture between the wall cabinets. Nearly 16-feet of infinite and expandable design options for single or multi-wall designs (11.84-ft pictured). Metallic gloss car-like color facing available in five (5) color options.

### FEATURES:

- Strong  $\frac{3}{4}$ " MDF and PB Cabinet Construction w/Textured Grey PVC Laminate
- Strong  $\frac{3}{4}$ " MDF Facings with PVC Gloss Metallic Color
- Industrial Strength 1-inch Thick Shelves with 200 lb Load Rating
- Full Extension Drawer Glides with 100 lb Load Rating
- Jumbo 0.75-inch Brushed Chrome Pulls
- Custom Shop Style Full Radius Profile
- Lock secures Items
- Designer Style 6-inch Feet Keep Cabinets Away from Moisture
- Color: Available in Five (5) Colors
- Maximum Dimensions: 189.20" W x 21" D x 82" H
- Minimum Dimensions: 142" W x 21" D x 80" H

Offers nearly 16-ft of infinite design options. Pictured, 11.84-feet.



Pictured in Stardust Silver Metallic and Peppercorn Grey



## 8-Piece w/Bamboo Worktop UG22082B

One of the most popular kits. This eight (8) piece set offers nearly 18-ft of infinite and expandable modular design options for single or multi-wall designs (11.84-ft pictured), just add a comfy stool to create that dream workstation. Metallic gloss car-like color facing available in five (5) color options will have you stand-out in the crowd.

### FEATURES:

- Strong ¾" MDF and PB Cabinet Construction w/Textured Grey PVC Laminate
- Strong ¾" MDF Facings with PVC Gloss Metallic Color
- Industrial Strength 1-inch Thick Shelves with 200 lb Load Rating
- Full Extension Drawer Glides with 100 lb Load Rating
- Jumbo 0.75-inch Brushed Chrome Pulls
- Custom Shop Style Full Radius Profile
- Lock secures Items
- Designer Style 6-inch Feet Keep Cabinets Away from Moisture
- Color: Available in Five (5) Colors
- Maximum Dimensions: 213" W x 21" D x 82" H
- Minimum Dimensions: 142" W x 21" D x 80" H

Offers nearly 18-ft of infinite design options. Pictured, 11.83-ft.



Pictured in Graphite Grey Metallic and Peppercorn Grey



## 9-Piece w/Bamboo Worktop UG22092B

This popular nine (9) piece kit offers nearly 18-ft of infinite and expandable modular design options for single or multi-wall designs (11.84-ft pictured). Metallic gloss car-like color facing available in five (5) color options and ability to mix and match colors for unique designs will have you the envy of all.

### FEATURES:

- Strong  $\frac{3}{4}$ " MDF and PB Cabinet Construction w/Textured Grey PVC Laminate
- Strong  $\frac{3}{4}$ " MDF Facings with PVC Gloss Metallic Color
- Industrial Strength 1-inch Thick Shelves with 200 lb Load Rating
- Full Extension Drawer Glides with 100 lb Load Rating
- Jumbo 0.75-inch Brushed Chrome Pulls
- Custom Shop Style Full Radius Profile
- Lock secures Items
- Designer Style 6-inch Feet Keep Cabinets Away from Moisture
- Color: Available in Five (5) Colors
- Maximum Dimensions: 213" W x 21" D x 82" H
- Minimum Dimensions: 142" W x 21" D x 80" H

Offers nearly 18-ft of infinite design options. Pictured, 11.83-ft.



Pictured in Ruby Red Metallic and Peppercorn Grey



## 10-Piece w/Bamboo Worktop UG22102W

This deluxe ten (10) piece kit with workstation offers nearly 18-ft of infinite and expandable modular design options for single or multi-wall designs (17.75-ft pictured). Metallic gloss car-like color facing available in five (5) color options and ability to mix and match colors for unique designs.

### FEATURES:

- Strong  $\frac{3}{4}$ " MDF and PB Cabinet Construction w/Textured Grey PVC Laminate
- Strong  $\frac{3}{4}$ " MDF Facings with PVC Gloss Metallic Color
- Industrial Strength 1-inch Thick Shelves with 200 lb Load Rating
- Full Extension Drawer Glides with 100 lb Load Rating
- Jumbo 0.75-inch Brushed Chrome Pulls
- Custom Shop Style Full Radius Profile
- Lock secures Items
- Designer Style 6-inch Feet Keep Cabinets Away from Moisture
- Color: Available in Five (5) Colors
- Maximum Dimensions: 284" W x 21" D x 82" H
- Minimum Dimensions: 213" W x 21" D x 80" H

Offers nearly 24-feet of infinite design options. Pictured; 17.75-ft.



Pictured in Starfire White Metallic and Peppercorn Grey



## 15-Piece w/Dual Workstations UG22152G

This massive (15) piece kit offers nearly 33-ft of infinite and expandable modular design options for single or multi-wall designs (11.84-ft pictured). Dual workstations highlighted with upgraded solid Bamboo worktop. Metallic gloss car-like color facing available in five (5) color options and ability to mix and match colors for unique designs will have you the envy of all.

### FEATURES:

- Strong ¾" MDF and PB Cabinet Construction w/Textured Grey PVC Laminate
- Strong ¾" MDF Facings with PVC Gloss Metallic Color
- Industrial Strength 1-inch Thick Shelves with 200 lb Load Rating
- Full Extension Drawer Glides with 100 lb Load Rating
- Jumbo 0.75-inch Brushed Chrome Pulls
- Custom Shop Style Full Radius Profile
- Lock secures Items
- Designer Style 6-inch Feet Keep Cabinets Away from Moisture
- Color: Available in Five (5) Colors
- Maximum Dimensions: 390.5" W x 21" D x 82" H
- Minimum Dimensions: 248.50" W x 21" D x 80" H

Offers nearly 33-ft of infinite design options. Pictured, 20.71-ft.



Pictured in Graphite Grey Metallic and Peppercorn Grey

## 16-Piece w/Workstation UG22162R

This "Super System" provides sixteen (16) pieces and nearly 36-ft of infinite modular design options for single or multi-wall designs (23.67-ft pictured). Metallic gloss car-like color facing in five (5) color options and ability to mix and match colors for unique designs makes this the choice for most discerning projects.

### FEATURES:

- Strong  $\frac{3}{4}$ " MDF and PB Cabinet Construction w/Textured Grey PVC Laminate
- Strong  $\frac{3}{4}$ " MDF Facings with PVC Gloss Metallic Color
- Industrial Strength 1-inch Thick Shelves with 200 lb Load Rating
- Full Extension Drawer Glides with 100 lb Load Rating
- Jumbo 0.75-inch Brushed Chrome Pulls
- Custom Shop Style Full Radius Profile
- Lock secures Items
- Designer Style 6-inch Feet Keep Cabinets Away from Moisture
- Color: Available in Five (5) Colors
- Maximum Dimensions: 426" W x 21" D x 82" H
- Minimum Dimensions: 284" W x 21" D x 80" H

Offers nearly 36-ft of infinite design options. As pictured, 23.65-ft.



Pictured in Ruby Red Metallic and Peppercorn Grey

## 17-Piece w/Workstation UG22172B

This "Super System" provides seventeen (17) pieces and nearly 36-ft of infinite modular design options for single or multi-wall designs (23.67-ft pictured). Metallic gloss car-like color facing in five (5) color options and ability to mix and match colors for unique designs makes this the choice for most discerning projects.

### FEATURES:

- Strong  $\frac{3}{4}$ " MDF and PB Cabinet Construction w/Textured Grey PVC Laminate
- Strong  $\frac{3}{4}$ " MDF Facings with PVC Gloss Metallic Color
- Industrial Strength 1-inch Thick Shelves with 200 lb Load Rating
- Full Extension Drawer Glides with 100 lb Load Rating
- Jumbo 0.75-inch Brushed Chrome Pulls
- Custom Shop Style Full Radius Profile
- Lock secures Items
- Designer Style 6-inch Feet Keep Cabinets Away from Moisture
- Color: Available in Five (5) Colors
- Maximum Dimensions: 426" W x 21" D x 82" H
- Minimum Dimensions: 284" W x 21" D x 80" H

Offers nearly 36-ft of infinite design options. As pictured, 23.65-ft.



Pictured in Midnight Black Metallic and Peppercorn Grey